

**HIRA Antibody**  
**Rabbit mAb**  
**Catalog # AP92496**

## Specification

---

### HIRA Antibody - Product Information

Application **WB, FC, ICC, IP**  
Primary Accession [P54198](#)  
Clonality **Monoclonal**  
**Other Names**  
DGCR1; HIR; HIRA; TUP 1; TUPLE1;

Isotype **Rabbit IgG**  
Host **Rabbit**  
Calculated MW **111835 Da**

### HIRA Antibody - Additional Information

Dilution **WB~~1:1000**  
**FC~~1:10~50**  
**ICC~~N/A**  
**IP~~N/A**  
Purification **Affinity-chromatography**  
Immunogen **A synthesized peptide derived from human HIRA**  
Description **Cooperates with ASF1A to promote replication-independent chromatin assembly. Required for the periodic repression of histone gene transcription during the cell cycle.**  
Storage Condition and Buffer **Rabbit IgG in phosphate buffered saline , pH 7.4, 150mM NaCl, 0.02% sodium azide and 50% glycerol. Store at +4°C short term. Store at -20°C long term. Avoid freeze / thaw cycle.**

### HIRA Antibody - Protein Information

**Name** HIRA

**Synonyms** DGCR1, HIR, TUPLE1

#### Function

Cooperates with ASF1A to promote replication-independent chromatin assembly. Required for the periodic repression of histone gene transcription during the cell cycle. Required for the formation of senescence-associated heterochromatin foci (SAHF) and efficient senescence-associated cell cycle exit.

#### Cellular Location

Nucleus. Nucleus, PML body. Note=Primarily, though not exclusively, localized to the nucleus. Localizes to PML bodies immediately prior to onset of senescence

#### **Tissue Location**

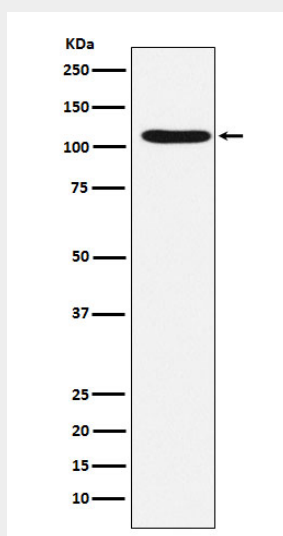
Expressed at high levels in kidney, pancreas and skeletal muscle and at lower levels in brain, heart, liver, lung, and placenta.

#### **HIRA Antibody - Protocols**

Provided below are standard protocols that you may find useful for product applications.

- [Western Blot](#)
- [Blocking Peptides](#)
- [Dot Blot](#)
- [Immunohistochemistry](#)
- [Immunofluorescence](#)
- [Immunoprecipitation](#)
- [Flow Cytometry](#)
- [Cell Culture](#)

#### **HIRA Antibody - Images**



Western blot analysis of HIRA expression in HeLa cell lysate.